

Newsletter December 2024

Edited and produced by David

FORTHCOMING CLUB NIGHTS

INDOOR PAINTING

Friday 6th December at Walton Church 9.30am until 2.00pm.

Friday 13th December – Christmas Party. Wear your Christmas jumpers and enjoy the social gathering.

Friday 10th January – Worknight - Celebration. Bring your own materials.

PAINTING CURVES

By David Charlesworth.

I am guessing that French Curves are not in everyone's tool draw, who needs them for painting? However, I have always found them immensely useful: even a flower study can need near perfect curves for a stem, but I have to paint a lot of industrial scenes and straight lines and perfect curves are everywhere.

But what do you do if your set of preformed curves don't do the job. Using a rigger brush is one way, the long bristles absorb slight involuntary movements of the hand, but a ruling pen is near impossible.

The method I use is a knife! I make my own curve, a modelling knife on thin card is tough enough for you to have more control. Trace your desired curve and transfer this to a large enough piece of card. I often use scrap mount board. The secret of cutting of course is don't look at the knife, look at where you want it to go. (Like riding a motorbike!)



See method (right)

LIBRARY CABINETS

Members may not be aware that it is possible to show their work in the glass cabinets in the foyer of the main library in Chesterfield. There is no charge and you can sell work with no commission being taken, you just have to organise sales yourself. Bookings are on a first come basis and the duration seems to be up to you, Ian Geary has booked two months this year and has arranged for the same next year.

You can put flyers in the cabinets advertising exhibitions etc and it would be useful if a Club flyer/programme was included – a good way to attract new members.

Contact is Becca Horton, Business Services Assistant. email: becca.horton@derbyshire.gov.uk or you can just ask at the desk.



Around The Galleries by Ian Geary

The Harley Gallery at Welbeck held it's annual Open Exhibition from 27th July to 18th October this year and there was a very nice mix of artworks on display.

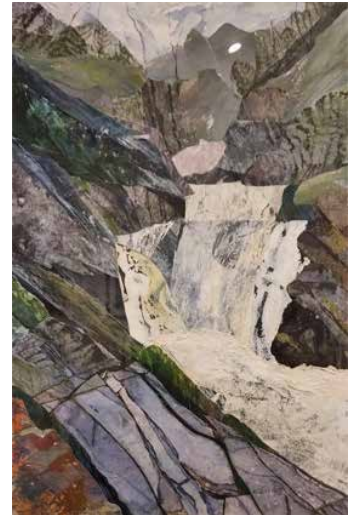
One that I particularly liked was a monoprint* by Jeannie Clark titled 'Dennis'.

Another that caught my eye was a collage by Rosemary Firth called 'Ingleton Waterfalls Series No1'.

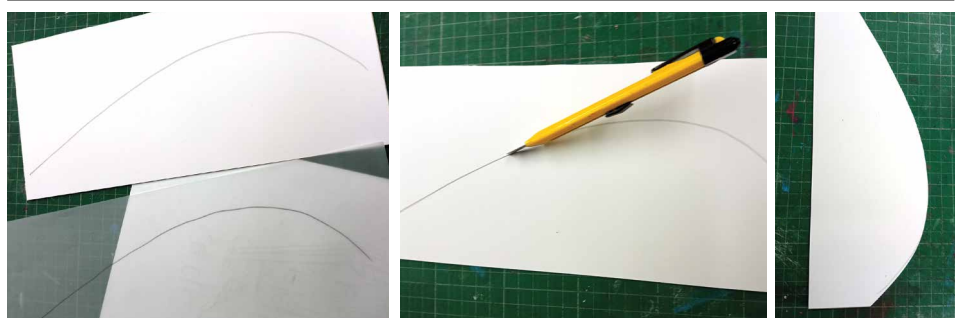
*A monoprint is a printmaking technique that produces a single image that can't be replicated. It involves using a glass or Perspex sheet to transfer a design onto paper. The process often uses water-based ink, which is applied with a roller to the printing sheet.



Dennis



Ingleton Waterfalls



Trace, transfer, cut and use.

FORTHCOMING EVENTS/WORKSHOPS

Straight Curves Art and Crafts

Untutored Life Drawing Sunday 15th December so book now. At just £25 it is unbeatable. Five artists per class only. Session runs 10am – 12.30pm with a tea break and parking is easy on a Sunday. 104 Saltergate, Chesterfield. (01246) 807575 or 07976 845662 See www.straightcurves.co.uk for their full range of Art & Craft Classes for adults and children. Look for the icons.

(If we don't support them we'll lose it and it is a particular favourite of the Chairman!)

Hunloke Art Club

Friendly group of artists who meet regularly at the Quad in Chesterfield to learn and share knowledge. Sessions are most Tuesdays, from 10am to 12pm, and 1pm to 3:00 - £12 per session with professional tutor every other week. Open to all

Held at the Quad, Dock Walk, Chesterfield. If memory serves, I think this was the former Wheatbridge Hotel. For more details contact Hazel at: Info@hazelmoney.co.uk

THE AGM January 24th

Don't forget to return your forms regarding ideas for the programme in the coming year. AGM's are important – and no pressure this year, the Committee is willing to continue though volunteers are always needed.

However, the club is short of members, so this is an important meeting. We'll try to get the official bit done quickly to allow time for us to socialise more than usual.

BIOGRAPHIES!

We have got nowhere with the biography books, so this is going to change in the New Year. The Chairman will be coming round! Although it is on a voluntary basis, no one has done anything – self-included. We all have failing memories and the books are a valuable way of getting to know and remember everyone. Just have some jpeg images of your work to hand, if photographs are a problem we can help.

Members' Corner

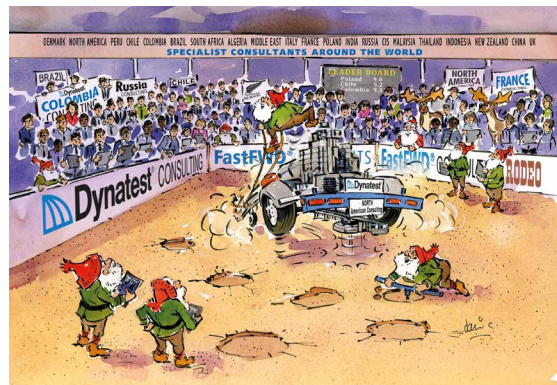
Ian Geary

A Christmas Still Life', Oil on canvas. A combination of The Constant Tin Soldier fairy tale by Hans Christian Andersen and The Nutcracker ballet (1893) by Tchaikovsky.



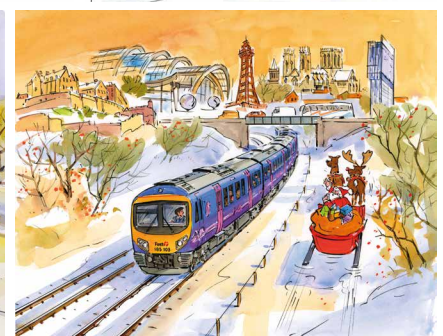
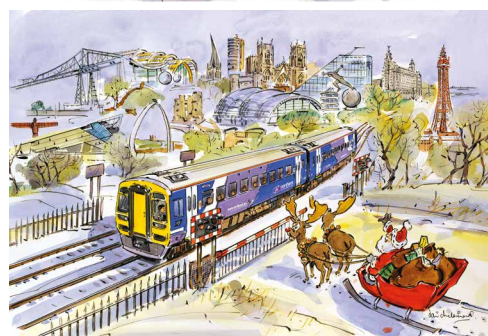
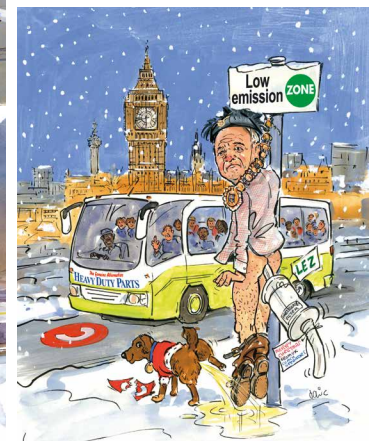
Christmas card fun (by David because I had nothing else!)

For many years I designed and produced Christmas cards for several companies including Dynatest in Denmark, Heavy Duty Parts and a large number of railway companies and Councils. They were difficult, but the results were great fun.



I don't know how we got away with Ken Livingstone (below). His new emissions laws cost the bus companies £3000 per bus in 2007 - and they not happy!

And in 2004 (left) the big four bus manufacturers tried to put Heavy Duty out of business - for several years afterwards, our cards were a case of "up yours"!



There are too many to mention and I have never collated them but it did make November and December incredibly busy, demanding very long days. Sadly, several things killed it off: Tony Blair claiming, wrongly, that Greetings Cards destroyed forests, Railway Companies and Councils running short of money and companies like Dynatest who pulled all their marketing work back to Copenhagen!